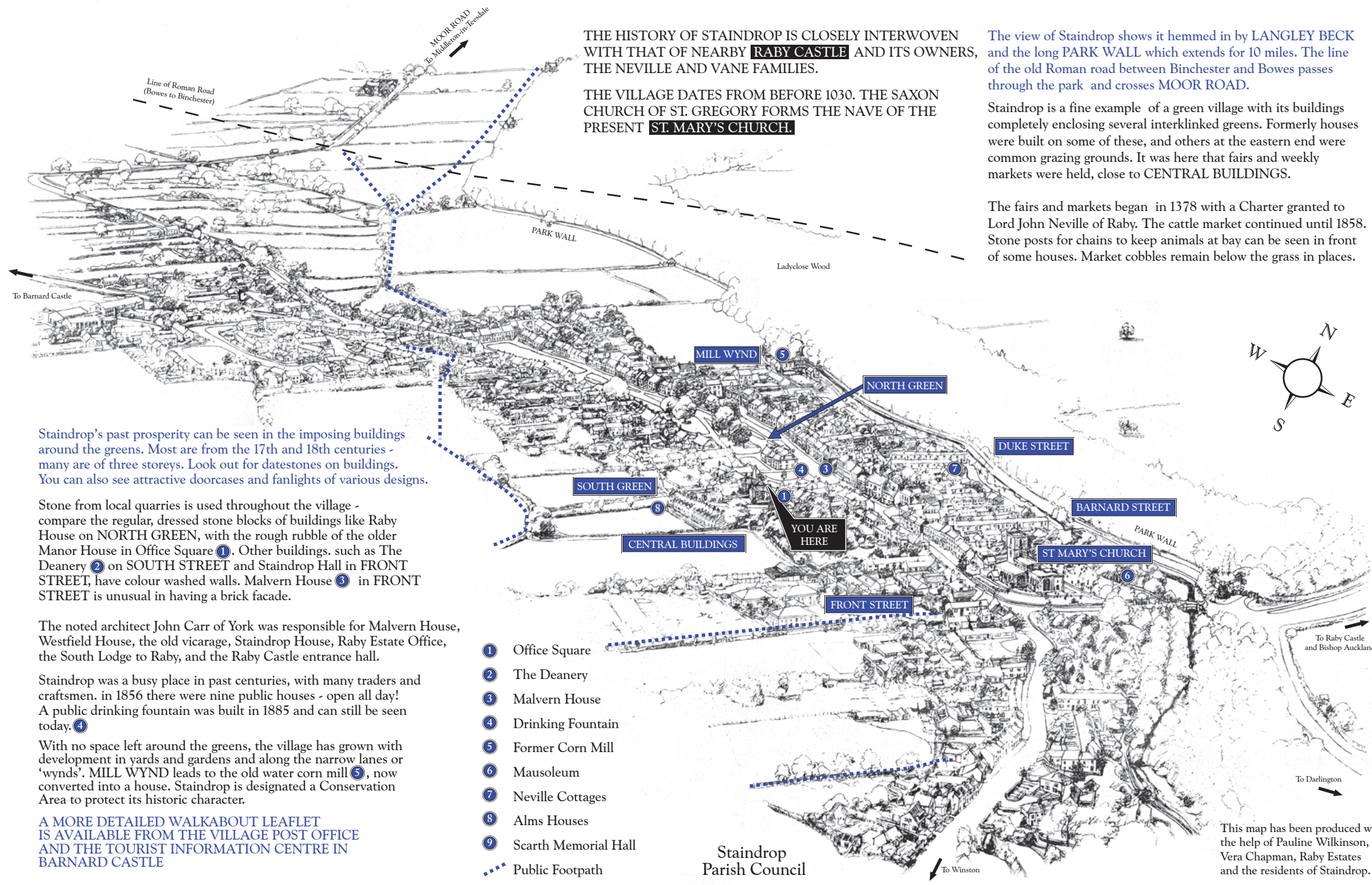


STAINDROP - An Historical View



THE HISTORY OF STAINDROP IS CLOSELY INTERWOVEN WITH THAT OF NEARBY **RABY CASTLE** AND ITS OWNERS, THE NEVILLE AND VANE FAMILIES.

THE VILLAGE DATES FROM BEFORE 1030. THE SAXON CHURCH OF ST. GREGORY FORMS THE NAVE OF THE PRESENT **ST. MARY'S CHURCH**.

The view of Staindrop shows it hemmed in by **LANGLEY BECK** and the long **PARK WALL** which extends for 10 miles. The line of the old Roman road between Binchester and Bowes passes through the park and crosses **MOOR ROAD**.

Staindrop is a fine example of a green village with its buildings completely enclosing several interlinked greens. Formerly houses were built on some of these, and others at the eastern end were common grazing grounds. It was here that fairs and weekly markets were held, close to **CENTRAL BUILDINGS**.

The fairs and markets began in 1378 with a Charter granted to Lord John Neville of Raby. The cattle market continued until 1858. Stone posts for chains to keep animals at bay can be seen in front of some houses. Market cobbles remain below the grass in places.

STAINDROP AND RABY

In 1378 Lord John Neville was granted a licence by Bisop Hatfield of Durham to fortify Raby Castle. In 1569 the Neville Earls of Westmorland, lost their lands to the Crown for their part in the rebellion known as the 'Rising of the North'. In 1626 the Vanes became owners of Raby Castle and renewed Staindrop's market and fair charter. In 1698 the head of the Vane family became Lord Barnard whose descendants still own Raby Castle.

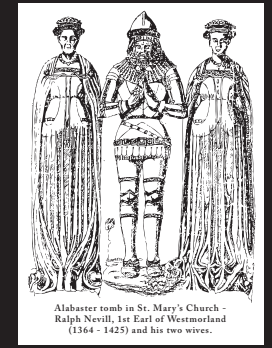


EVERYWHERE YOU LOOK IN STAINDROP YOU CAN SEE REMINDERS OF THE RABY CONNECTION:-

Neville and Vane tombs and effigies stand inside **ST MARY'S CHURCH**, a fine example of the evolution of a parish church, showing work of all periods.

Master mason John d'Ireby was responsible for the enlargement of the church. His work is also seen at the Great Kitchens of Durham Cathedral as well as Raby and Auckland Castles.

In the churchyard is a mausoleum **6** built in 1850 for Henry Vane, 2nd Duke of Cleveland. Barnard Stree, Duke Street, and the Raby Estate Office in Office Square **1** and Neville Cottages **7** all show the Raby connection. The almshouses **8** were built in 1862 for the Duke of Cleveland's Chairity for "poor persons of good character, who are at least 60 years of age". Scarthe Memorial Hall **9** is testimony to T. F. Scarth, agent for the Duke of Cleveland.



Staindrop's past prosperity can be seen in the imposing buildings around the greens. Most are from the 17th and 18th centuries - many are of three storeys. Look out for datestones on buildings. You can also see attractive doorcases and fanlights of various designs.

Stone from local quarries is used throughout the village - compare the regular, dressed stone blocks of buildings like Raby House on **NORTH GREEN**, with the rough rubble of the older Manor House in Office Square **1**. Other buildings, such as The Deanery **2** on **SOUTH STREET** and Staindrop Hall in **FRONT STREET**, have colour washed walls. Malvern House **3** in **FRONT STREET** is unusual in having a brick facade.

The noted architect John Carr of York was responsible for Malvern House, Westfield House, the old vicarage, Staindrop House, Raby Estate Office, the South Lodge to Raby, and the Raby Castle entrance hall.

Staindrop was a busy place in past centuries, with many traders and craftsmen. In 1856 there were nine public houses - open all day! A public drinking fountain was built in 1885 and can still be seen today. **4**

With no space left around the greens, the village has grown with development in yards and gardens and along the narrow lanes or 'wynds'. **MILL WYND** leads to the old water corn mill **5**, now converted into a house. Staindrop is designated a Conservation Area to protect its historic character.

A MORE DETAILED WALKABOUT LEAFLET IS AVAILABLE FROM THE VILLAGE POST OFFICE AND THE TOURIST INFORMATION CENTRE IN **BARNARD CASTLE**

This map has been produced with the help of Pauline Wilkinson, Vera Chapman, Raby Estates and the residents of Staindrop.

1 No replacement panel
visual area 995mm (w) x 540mm (h)